

State of Wyoming Corner Record

(In compliance with the CORNER PERPETUATION AND FILING ACT, Wyoming Statutes, 1977, Section 36-11-101, et. seq., and the Rules and Regulations of the Board of Registration for Professional Engineers and Professional Land Surveyors)

Reverse side of this form may be used if more space is needed.

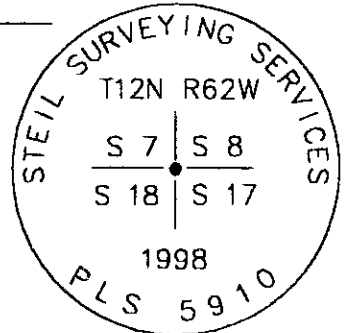
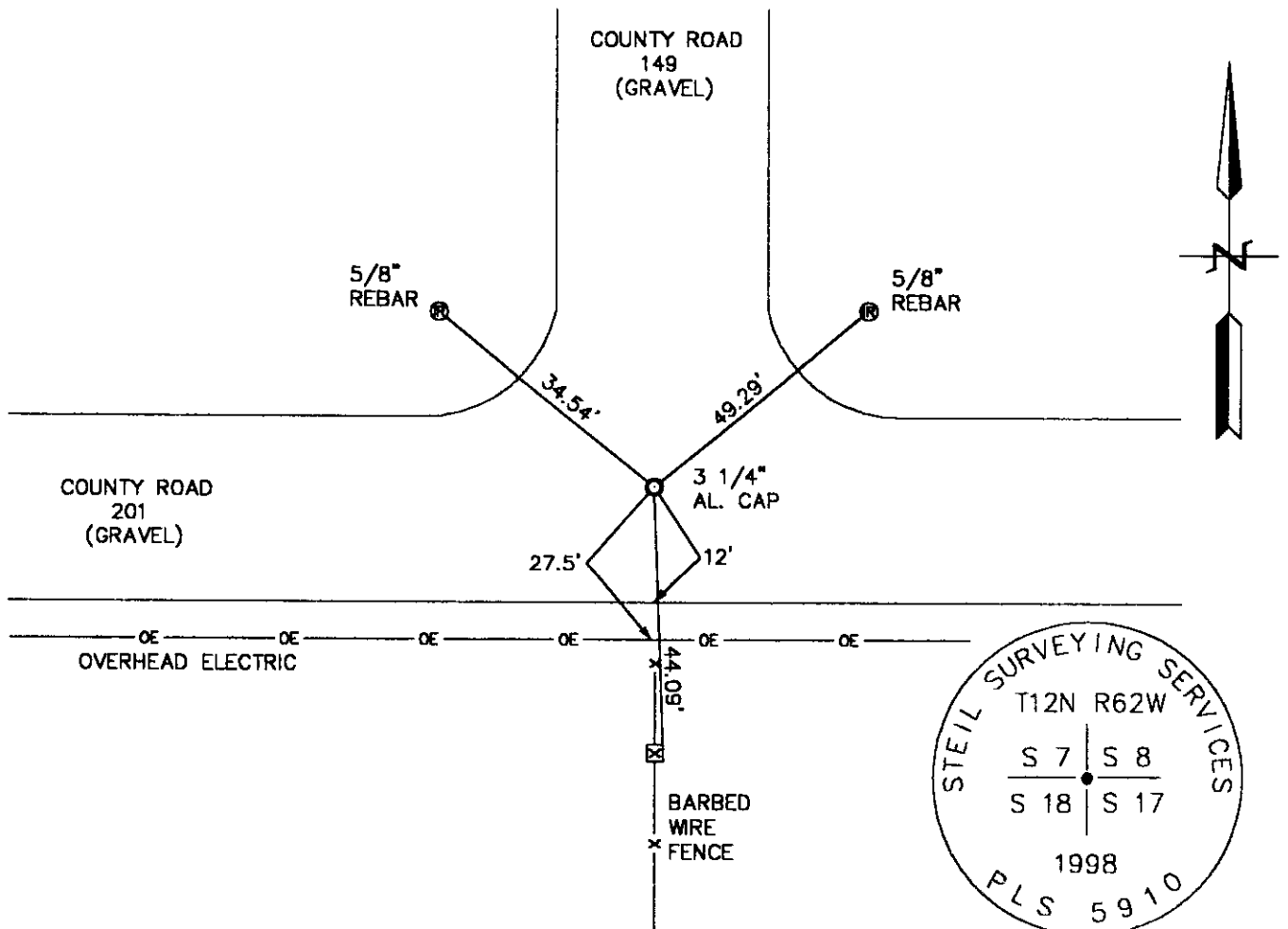
Record of original survey and citation of source of historical information (if corner is lost or obliterated). Description of corner monumentation evidence found and/or monument and accessories established to perpetuate the location of this corner. Sketch of relative location of monument, accessories, and reference points with course and distance to adjacent corner(s) (if determined in this survey). Method and rationale for reestablishment of lost or obliterated corner.

GLO RECORD: SET AN IRON POST, 3' LONG, 2" IN DIAMETER, 2 1/2' IN THE GROUND, WITH U.S. GLO BRASS CAP, FOR CORNER TO SECTIONS 7, 8, 17, & 18.

MONUMENT FOUND: NOTHING FOUND.

MONUMENT SET: SET A 5/8" X 24" REBAR WITH 3 1/4" ALUMINUM CAP DOWN 0.5' BELOW SURFACE OF COUNTY ROAD 201 AND 149. CAP STAMPED AS SHOWN BELOW.

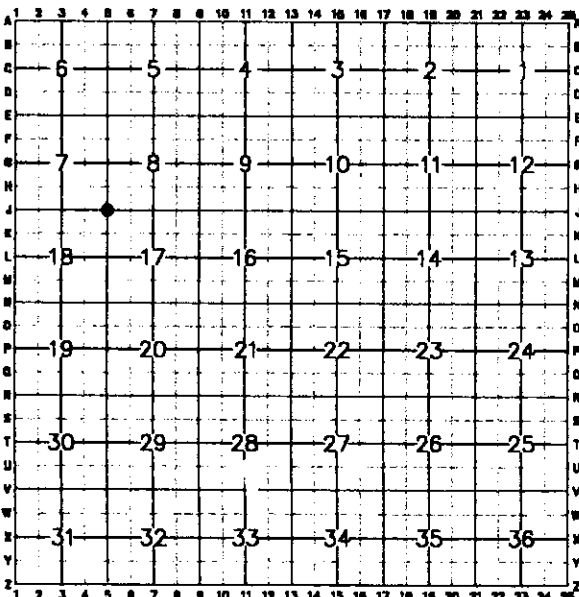
REFERENCES: MONUMENT LIES 27.5' NORTH OF A EAST-WEST POWERLINE AND 12' NORTH OF THE SOUTH EDGE COUNTY ROAD 201. SET A MAG NAIL AND 5/8" REBARs FOR REFERENCE.



Date of Field Work: 2-3-98

Office Reference: 98051

CROSS INDEX DIAGRAM



Firm/Agency, Address

STEIL SURVEYING SERVICES, LLC.

1102 WEST 19th STREET

CHEYENNE WY 82001

Telephone Number: (307) 634-7273

This corner record was prepared by me or under my direction and supervision.

SEAL & SIGNATURE

Corner Name: NW SECTION CORNER Section: 17 T12N R62W; 6th P.M. Cross-Index No.: J-5
 SBRPEPLS/PLSW: March 1994

